



## **I. Introduction**

Using the SysAngel DVD Generator, you have been able to burn your own Windows XP DVD. It's a full, rich, Windows distribution, containing all necessary drivers, updates and software. This document shows how to use this DVD to install Windows in a 5-minute manipulation.

## **II. Prerequisites**

- This might seem quite obvious, but it's worth reminding that the computer you want to use your SysAngel-made DVD must have a DVD-Rom device.
- The computer should be able to boot a DVD. This is the case for most computers, and most BIOS today are set with factory defaults that put the CD/DVD on top of the media to boot. But if it is not the case, then you'll have to reboot the computer, open the setup, and modify the boot sequence for the CD/DVD to be booted before the hard disk drive.

### III. Reviewing the Installation Procedure

1. This is the first screen you will see when booting the DVD. What you're seeing is a Linux boot. Just wait...

*(We use a special Linux light live distribution to preinstall Windows on your computer.)*

```

PXELINUX 3.01 0x41d47014 Copyright (C) 1994-2005 H. Peter Anvin
UNDI data segment at: 0009C730
UNDI data segment size: 2400
UNDI code segment at: 0009EC00
UNDI code segment size: 0A04
PXE entry point found (we hope) at 9EC0:0106
My IP address seems to be 0AA00B65 10.160.11.101
ip=10.160.11.101:10.160.22.1:10.160.11.254:255.255.254.0
TFTP prefix: Setup\English\Images\RIP_Test\i386\templates\
Trying to load: pxelinux.cfg/01-00-0c-29-18-8b-b8
Trying to load: pxelinux.cfg/0AA00B65
Trying to load: pxelinux.cfg/0AA00B6
Trying to load: pxelinux.cfg/0AA00B
Trying to load: pxelinux.cfg/0AA000
Trying to load: pxelinux.cfg/0AAA0
Trying to load: pxelinux.cfg/0AAA
Trying to load: pxelinux.cfg/0A
Trying to load: pxelinux.cfg/0
Trying to load: pxelinux.cfg/default
Loading kernel.....
Loading initrd.gz.....
  
```

After the Linux boot, the configuration interface shows up. ALL questions will be raised at first, taking no more than 5 minutes to answer, so everything else is unattended and free of question prompts.

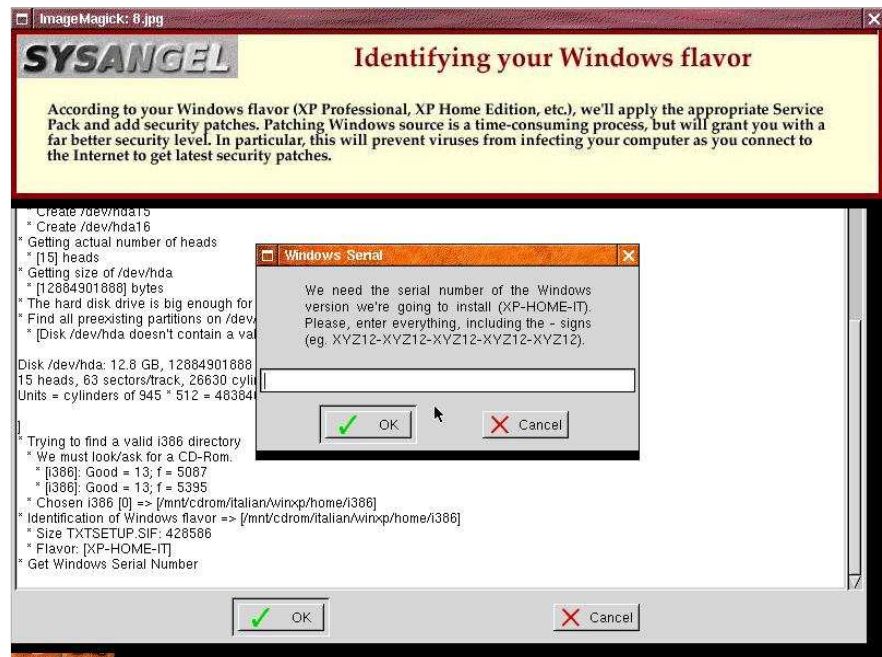
Choose “Install Windows”, and click OK.



☛ *Be aware that during all this installation step, the keyboard will be US qwerty.*

If you did not enter a Windows serial number when building your own DVD with the DVD Generator, then you have an opportunity to enter it now. Else, you won't even see this screen.

*(If you still do not enter it, or enter a wrong serial number, then Microsoft genuine Windows Setup will finally ask or re-ask for a valid one later.)*



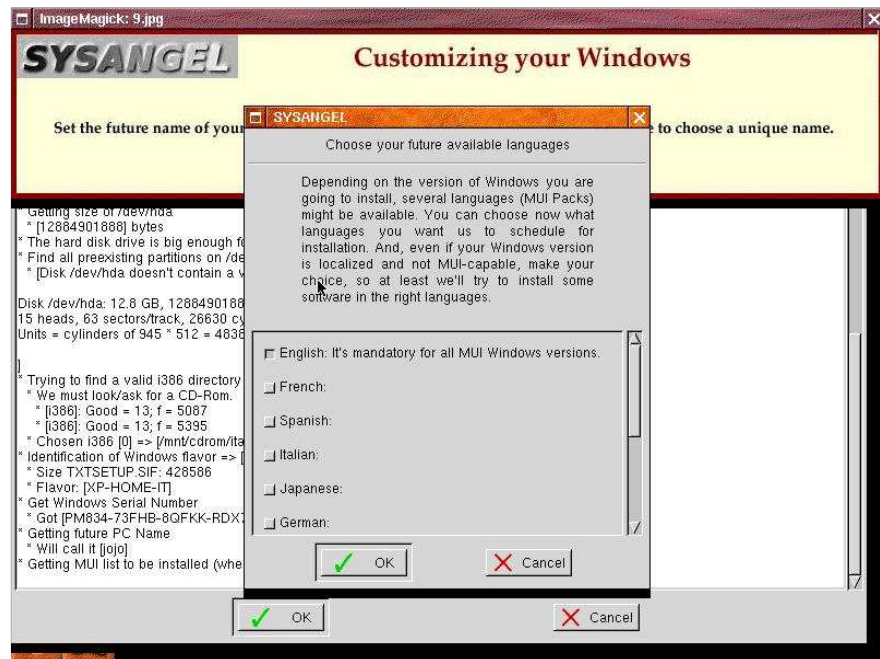
You will be asked for the name of the computer that will be installed. The name should comply to Microsoft's standards (not just digits, no special characters, etc.) Better choice: keep it simple, use letters and digits.

*(If you enter a bad name or no name at all, then the Windows Setup will choose one for you. You'll be able to modify it from the Control Panel, on System.)*



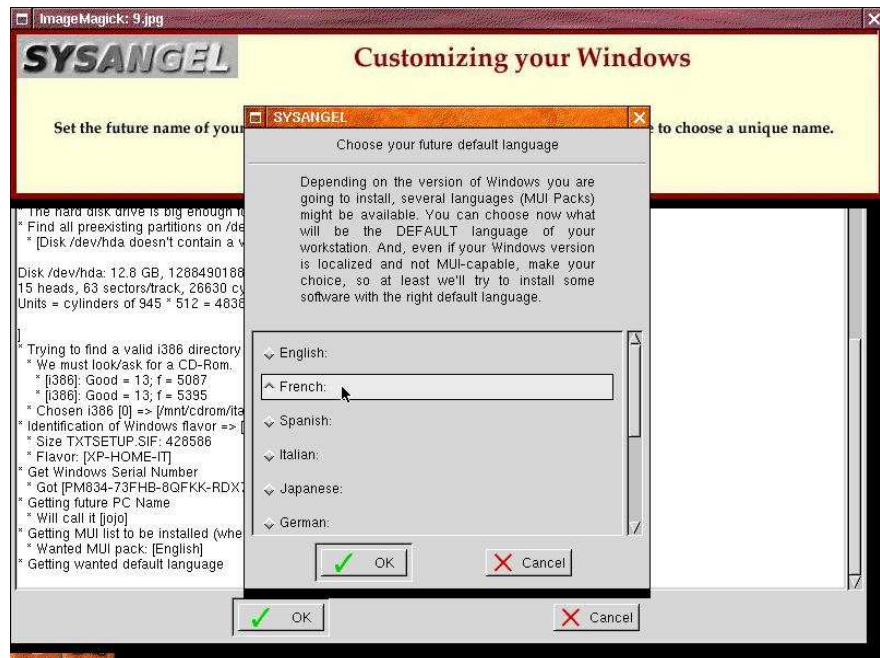
You will also be asked for the name of the computer user, and the name of his company. These questions are really raised by Microsoft Windows setup, and the information can be modified in the Control Panel (System). Use letters and digits too.

If the Windows XP source you used to generate your DVD was the English version, then it is multi-language-capable. In this screen, you can choose several MUI (multi-language interfaces) to be added, so the computer users will be able to have Windows menus displayed in their languages. If your source is not the English version, any choice made here will be ignored.

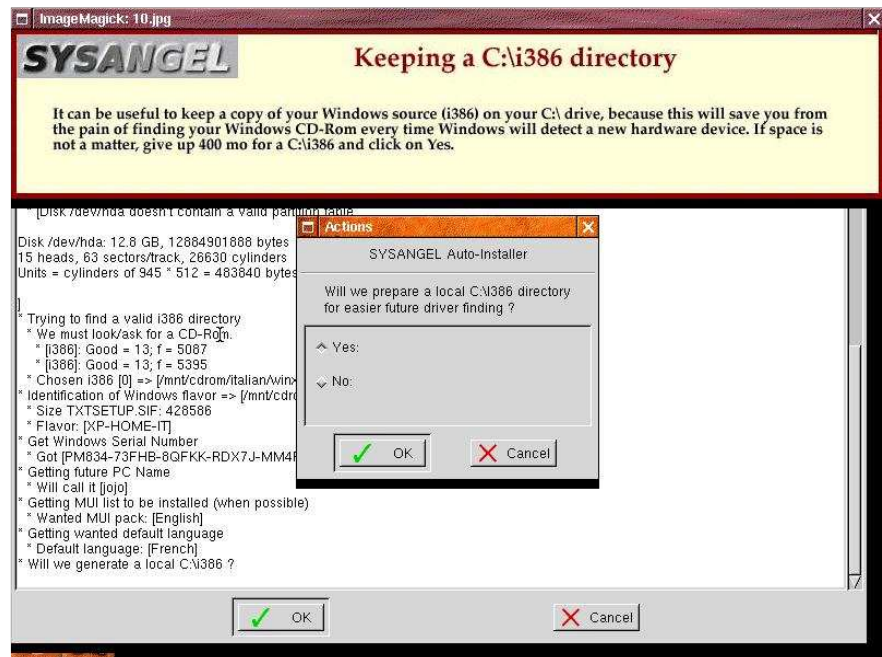


Subsequently, if you are to build a MUI system, you can choose here what will be the default language for the future users of the computer which Windows is going to be installed.

If your source is not the English version, any choice made here will be ignored.

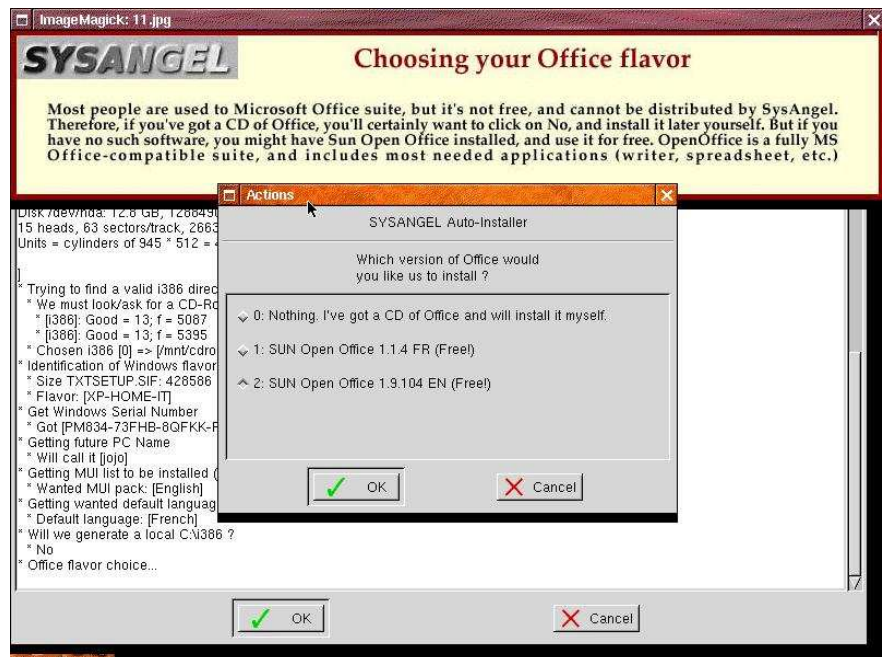


Many people find it useful to have the Windows i386 directory copied into the C:\ drive, so that they don't have to look for the CD each time a new driver needs to be installed. Click on Yes if you want a C:\i386 folder too.



We can install SUN Open Office on your computer. All available versions will be displayed for you to choose. (On the screenshot, there's an old French one, and a more recent English one.)

If you plan to use your own Office distribution (say, MS Office), choose "nothing".



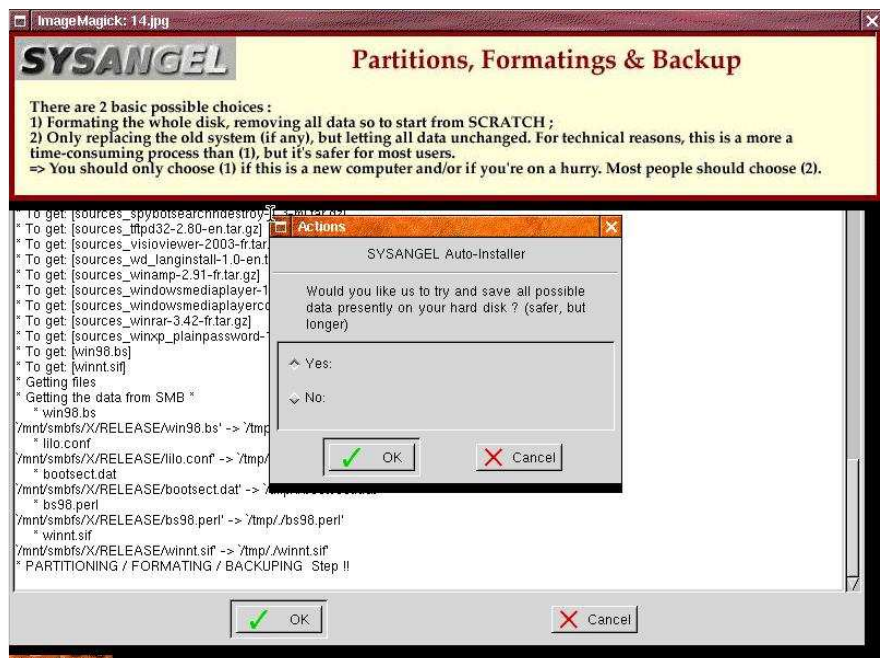
Some people (clearly, dotnet developers) like to have MS .Net SDK on their PC. Click Yes if you do too.

Note that the SDK has nothing to do with the .Net Framework. The Framework will be installed on your computer even if you click on No here.

Most people should choose the No option.

Basically, there are two ways your DVD can install Windows.

If there's already a NT, 2000, 2003 or XP bootable system on your PC, you can say Yes there. In this case, we'll be able to keep the boot sector, which is safer in some cases. The data you've got on your C partition will be kept. Only the C:\Windows and C:\Program Files ...

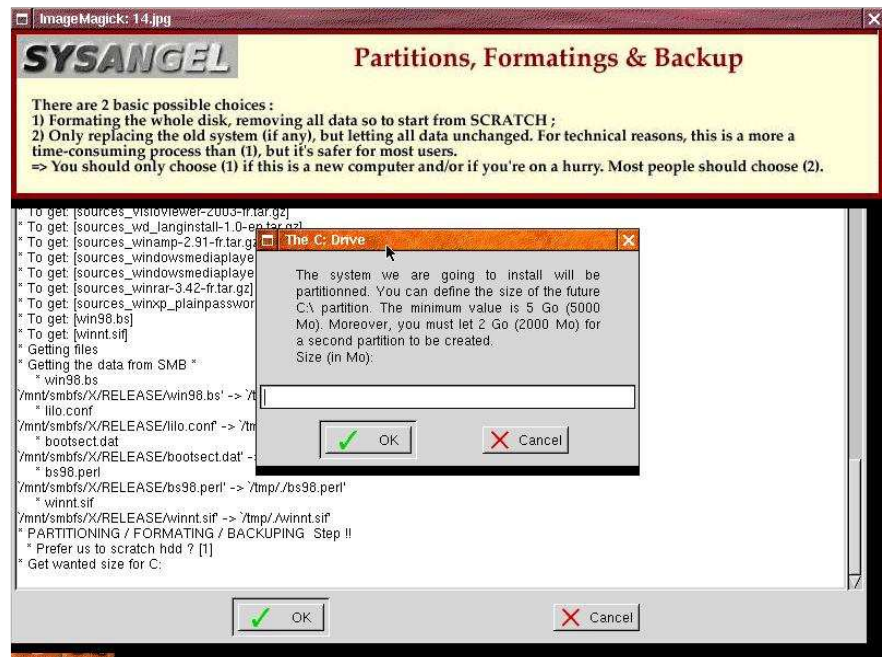


...folders will be deleted, and replaced with new, clean ones. Old "Documents and Setting" will be renamed to "Documents and Settings.OLD". The Windows setup will not format anything, and this is a real nice feature we proudly provide to users.

On another hand, you might want to format the whole drive, so to start with something as clean as possible. In this case, say No there, and we'll format the whole drive. Afterwards, we'll always create two partitions: a C: drive for the system, and a D: drive for your data. The C: drive will have to be at least 6 Go. All remaining space will be given to the D: drive.

If you've chosen No in the previous screen, then you can define the size of your C: system partition.

A fair choice is 20000 (for 20 Go), but the minimum is 6 Go.



Well, no more questions. Click the OK button and go for a good lunch... the system will boot a few times, up to the final Windows logon.

By default, you'll log in Windows with the Administrator account, and there will be no password.

**Enjoy!**



Have you successfully installed XP using SysAngel DVD Generator? Have you met some difficulties or troubles? Let us know! Please, visit our forum on our website (<http://dvdgen.windowsdream.com/>) and share your experience. Any feedback is appreciated, as this is the only way for us to improve the quality of this software.







```

c:\WINDOWS\System32\WD_First.exe
JOJO> * Argument 0 = station=PDT
JOJO> * Argument 1 = office=02003
JOJO> * OneLaunch = 0
JOJO> * Temporarily removing Hiberfil.sys
JOJO> * Start Fn MultiUserInterface
JOJO> Connection to the data of MUI Failed.
JOJO> * Start Fn WinLogon -- Methode [AUI01] -- IsIncrement [0]
JOJO>   To launch: [C:\WINDOWS\system32\WD_First.exe STATION=PDT OFFICE=02003]
JOJO> * End Fn WinLogon
JOJO> * End of Script: 13/07/2005 17:51:14
JOJO> -----
JOJO> * End Fn MultiUserInterface
JOJO> * Start Fn IEMultiInterfaceUser
JOJO> Connection to the data of MUI Failed.
JOJO> * Start Fn WinLogon -- Methode [AUI01] -- IsIncrement [0]
JOJO>   To launch: [C:\WINDOWS\system32\WD_First.exe STATION=PDT OFFICE=02003]
JOJO> * End Fn WinLogon
JOJO> * End of Script: 13/07/2005 17:51:14
JOJO> -----
JOJO> * End Fn IEMultiInterfaceUser
JOJO> * Start Fn HotFix
JOJO>   - Cumulative Help Update for Microsoft Windows XP Multilingual User Interface (MUI) Pack (KB841625) FRA
JOJO>     Start: 13/07/2005 17:51:14

```

